

# Agroecology in Lebanon: A Field Perspective

Exploring Sustainable Practices in Lebanese Agriculture

**Dr Salem Darwich**

**Dec 2024**



FONDS FRANÇAIS POUR  
L'ENVIRONNEMENT MONDIAL



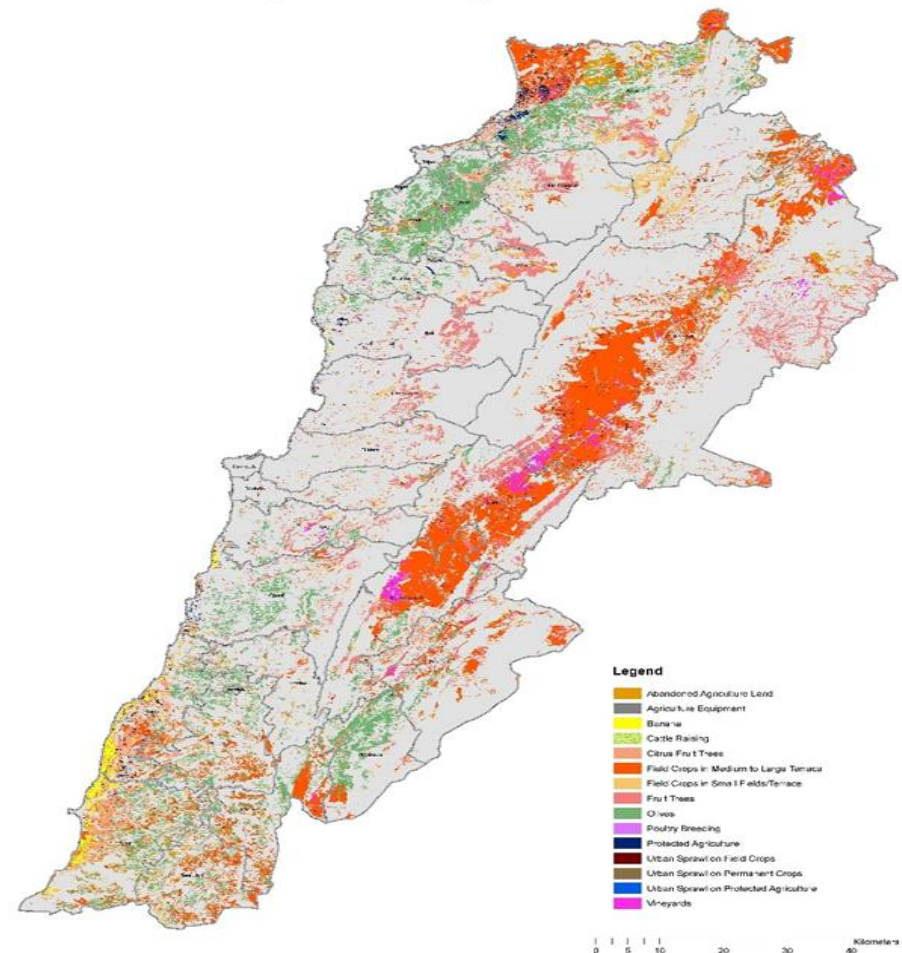
# Introduction to Agroecology in Lebanon

- Agroecology integrates ecological principles into agricultural practices.
- Focuses on sustainable farming to address food security and environmental challenges.

# Lebanon's Agricultural Landscape

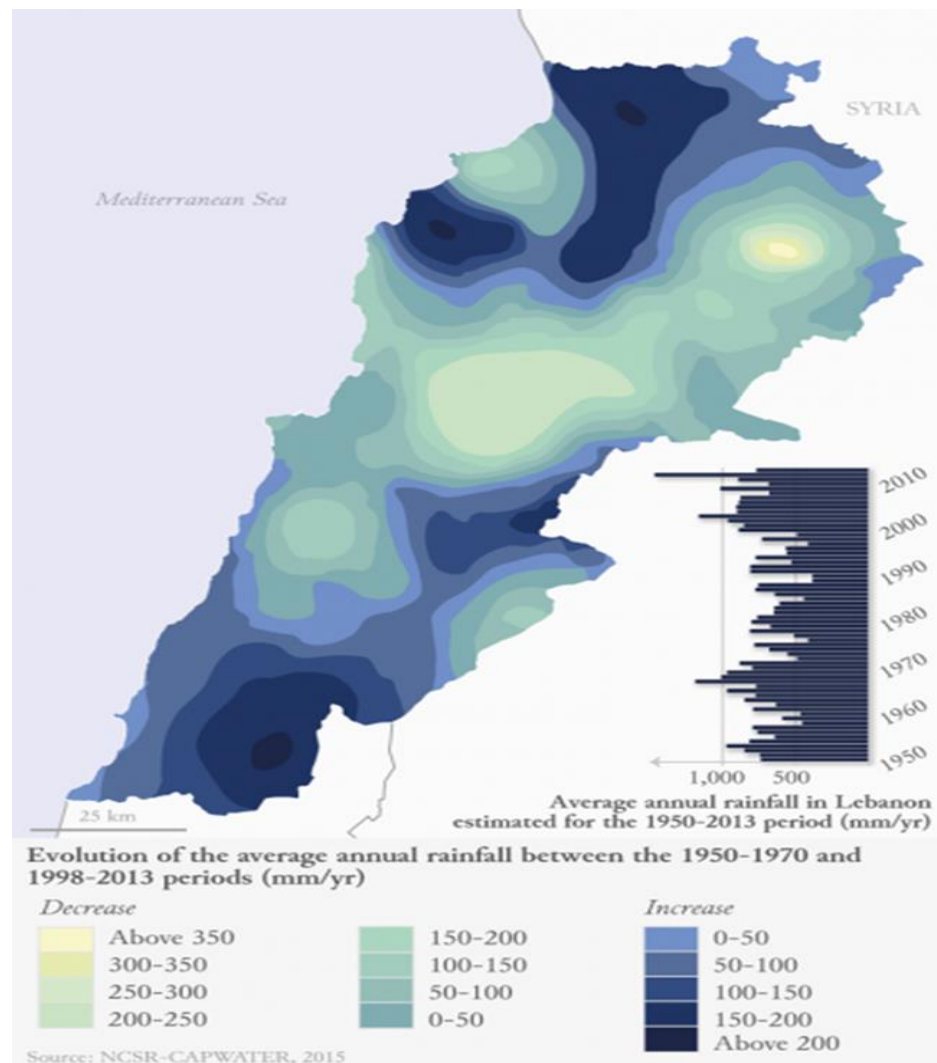
- Lebanon has diverse agricultural zones, from coastal plains to mountain terraces.
- Key crops include olives, citrus, grapes, and cereals.

Agriculture Map of Lebanon



# Challenges in Lebanese Agriculture

1. Water scarcity due to climate change and mismanagement.
2. Soil degradation and loss of fertility.
3. Economic instability affecting farmers' livelihoods.



# The SupMed Project in Lebanon

- SupMed focuses on improving water and land management practices.
- Targets the Bekaa Valley with innovative agroecological methods.





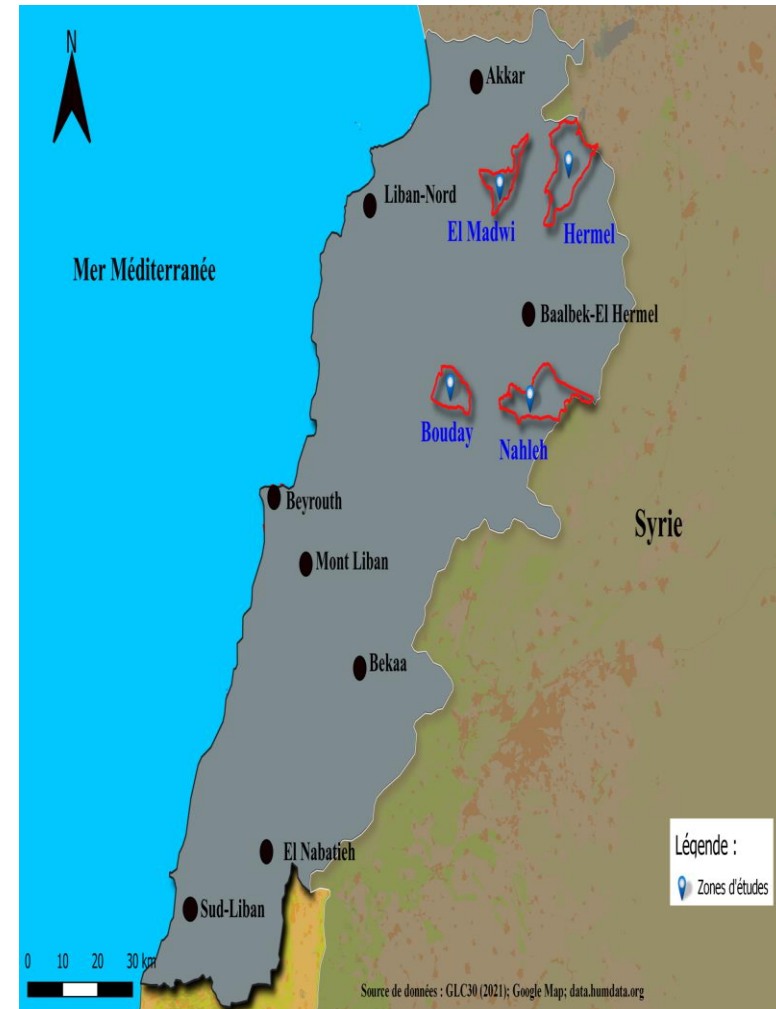


FONDS FRANÇAIS POUR  
L'ENVIRONNEMENT MONDIAL



# Agroecological Practices by SupMed

1. Water-efficient irrigation techniques (e.g., drip irrigation).
2. Crop diversification to enhance soil health.
3. Organic pest control methods.



# Field Observations in Lebanon

- Farmers adopting agroecological practices report improved yields.
- Challenges include access to resources and knowledge gaps.

# Socio-Economic Impact

Agroecology has the potential to:

1. Enhance food security in rural communities.
2. Create sustainable income opportunities for farmers.





# Recommendations for Scaling Agroecology

1. Provide training programs for farmers.
2. Strengthen policy support for agroecological initiatives.
3. Promote research and development in sustainable agriculture.

# Conclusion

- ❑ Agroecology offers a pathway to sustainable agriculture in Lebanon.
- ❑ Collaboration between farmers, policymakers, and researchers is key.



FONDS FRANÇAIS POUR  
L'ENVIRONNEMENT MONDIAL



# Thank You